



INDUSTRIAL EQUIPMENT & MATERIALS



**INDUSTRIAL MATERIALS
SUPPLY**



**PLANT MAINTENANCE
CONTRACTS**



**MECHANICAL
CONTRACTING**



**ENGINEERED
PACKAGE SYSTEMS**



**ELECTRICAL
CONTRACTING**



**STEEL BUILDINGS
CONSTRUCTION**

WE SUPPLY HIGH QUALITY AT REASONABLE COST

- * **Stainless Steel Pipes, Carbon Steel and Alloy Steel Pipes**
- * **Copper and Polymer Tubes**
- * **Pipe Fittings, Tube Fittings, Pipe Couplings, Expansion Joints**
- * **Instruments and Regulators for Oil, Gas, Chemical Plants**
- * **Alloy Steel & Stainless Steel Plates**
- * **Valves, Pumps, Filters**

- * **Electric Generators**
- * **Electric Motors, Variable Frequency Drives, UPS**
- * **Transformers, Capacitors, Circuit Breakers**
- * **MV, LV Distribution Panels, Switchgears, Compact Substations**
- * **LV Cubicles, Data Center Cabins**
- * **Actuators, Sensors, Automatic Control Equipment**

- * **Measuring-Testing & Inspection Tools and Devices**
- * **HVAC Equipment (AC Units, AHUs, Chillers, Fans)**
- * **Hot Water Boilers & Steam Boilers**
- * **Fire Protection Systems & Equipment**
- * **Air Compressors**
- * **Gearboxes, Speed Reducers, Soft-Starts**
- * **Roller Bearings, Ball Bearings**
- * **Pneumatic & Hydraulic Parts, Machine Spare Parts**
- * **Bolts & Nuts and all kinds of Fasteners**
- * **All types of Machines & Equipment**
- * **Subcontract manufacturing of customer-design Metal Parts**

REFERENCE PROJECTS OF MATERIALS SUPPLY



CENAL ELECTRIK URETIM A.S. KARABIGA 1320 MW



CO2 PLANT BAKU / AZERBAIJAN



COOLING TOWER PROJECT BAKU / AZERBAIJAN



DDO-4 OIL&GAS PLATFORM GUNESHLI / AZERBAICAN

02/09/2011 05:50 PM



METHANOL PLANT PROJECT OF AZMECO BAKU / AZERBAIJAN



METHANOL TERMINAL PROJECT POTI / GEORGIA



NEW AIRPORT ISTANBUL / TURKEY



NEW CAPITAL POWER PROJECT 4800 MW PCESCO / EGYPT



OSMANGAZI BRIDGE PROJECT KOCAELI / TURKEY



PVC PLANT NIJNI-NOVGOROD / RUSSIA



ULKER BISCUIT FACTORY ISTANBUL / TURKEY



YAVUZ SULTAN SELIM BRIDGE ISTANBUL / TURKEY

ABU RAWASH WASTE-WATER TREATMENT PLANT CAIRO/ EGYPT



4 X 400 KV GIS SUBSTATIONS AMARA / IRAQ



ENGINEERING SERVICE WAREHOUSE CAIRO / EGYPT



ASSUIT COMBINED CYCLE POWER PLANT / EGYPT

KIMA FERTILIZER COMPLEX ASWAN / EGYPT



SOCAR FERTILIZER PLANT SUMGAYIT / AZERBAIJAN



SOCAR HDPE PLANT SUMGAYIT / AZERBAIJAN



ATYRAU REFINERY MODERNIZATION PROJECT / KAZAKHSTAN

SPIRAL STEEL WATER PIPES TO LEMNOS ISLAND / GREECE



HDPE SEA-WATER COLLECTOR PIPES KOS ISLAND / GREECE



GULF OF SUEZ WIND POWER PLANT / EGYPT



KHAIRAT SC POWER PLANT 1250 MW / IRAQ

NEW WEST DAMIETTA CC POWER PLANT / EGYPT



GAMA CENTRAL ANATOLIA CCPP 853 MW KIRIKKALE/ TURKEY



YENİKÖY COAL POWER PLANT 630 MW MUĞLA / TURKEY

YATAGAN COAL POWER PLANT 630 MW MUĞLA / TURKEY

MATERIALS & EQUIPMENT WE SUPPLY



**STAINLESS STEEL PIPES
ALLOY STEEL PIPES
CARBON STEEL SEAMLESS PIPES
ERW PIPES & TUBES
API 5L & 5CT PIPES
SPIRAL-WELDED PIPES
GALVANIZED STEEL PIPES
COPPER & BRASS TUBES
POLYMER PIPES & TUBES**



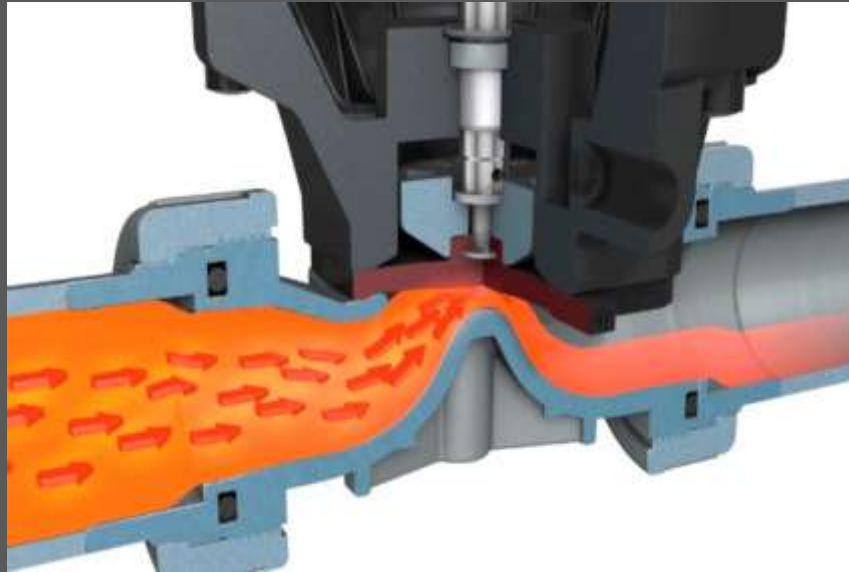
API 5L LINE PIPES
API 5CT CASING PIPES

**BALL VALVE
CROSS-CUT**



**BALL
VALVES**

**DIAPHRAGM
VALVE
CROSS-CUT**



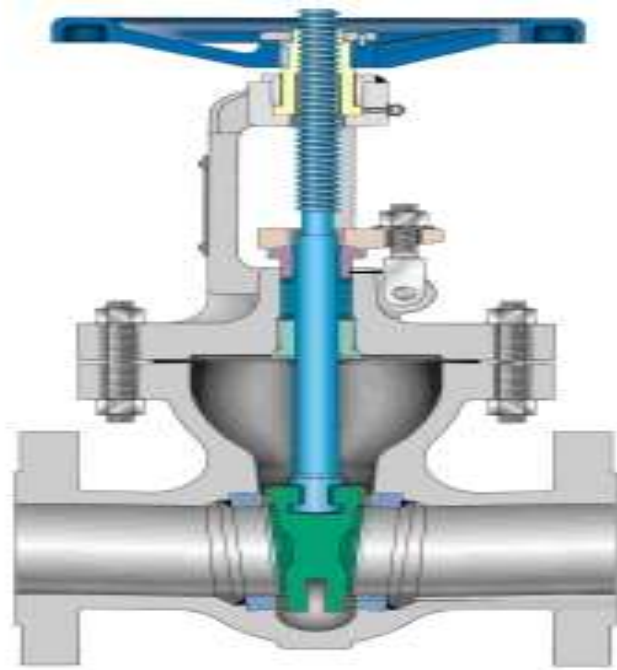
**DIAPHRAGM
VALVES**

**CHECK VALVE
CROSS-CUT**



**CHECK
VALVES**

**GATE VALVE
CROSS-CUT**

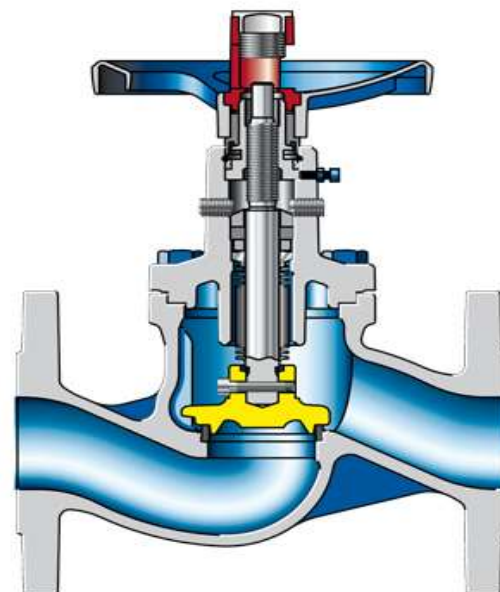


**GATE
VALVES**



**BUTTERFLY
VALVES**

**GLOBE VALVE
CROSS-CUT**



**GLOBE
VALVES**



ALL TYPES OF AUTOMATIC & MANUAL CONTROLLED VALVES



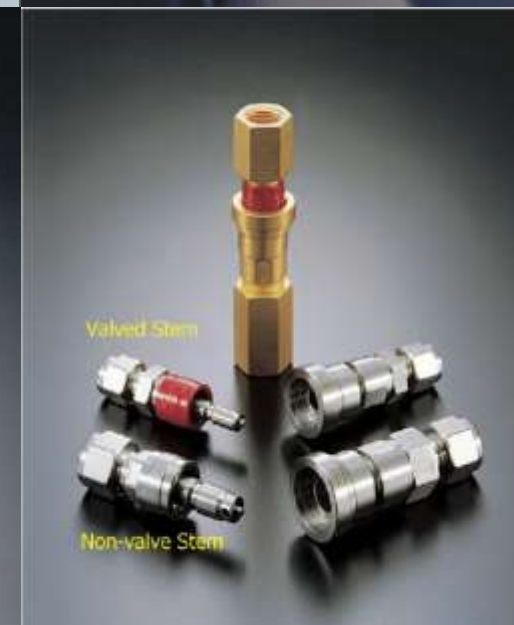
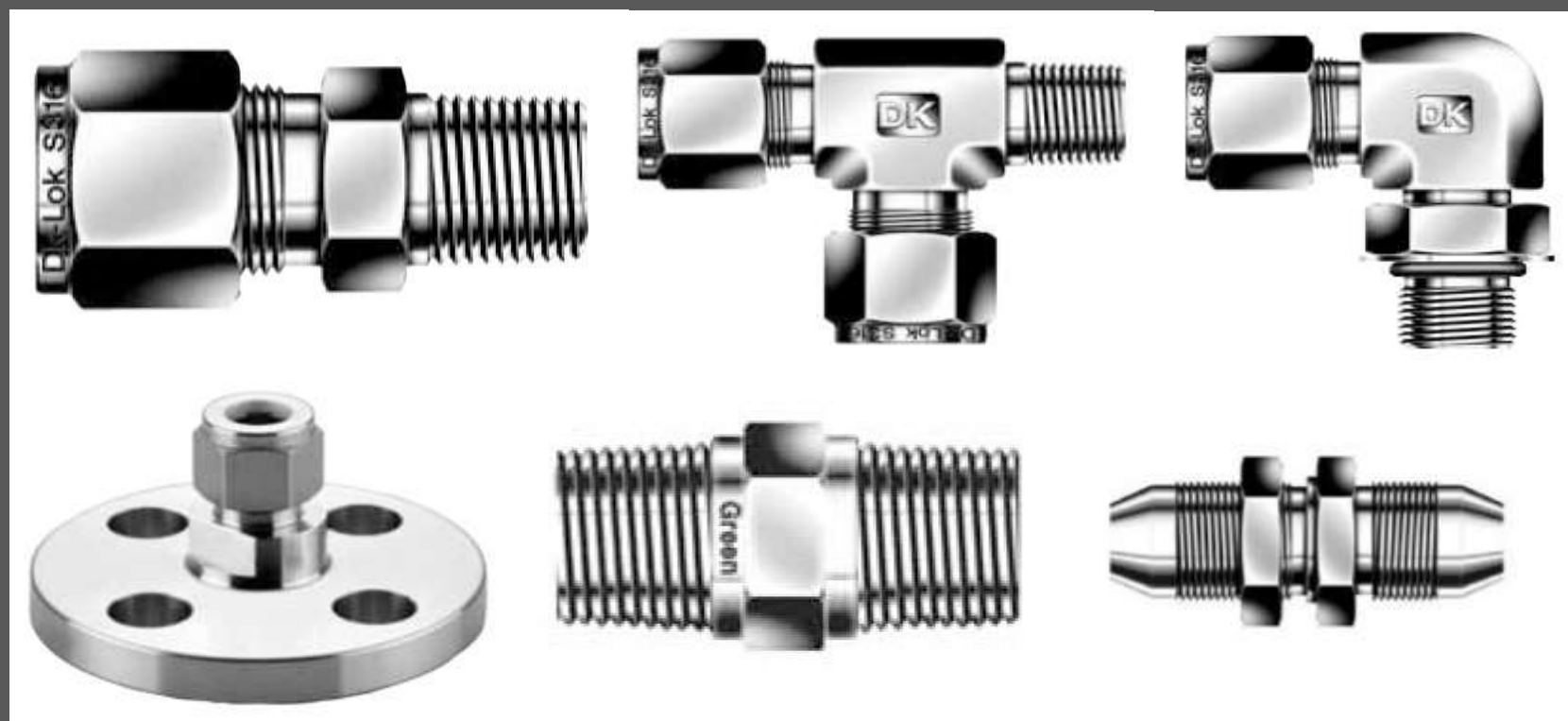
**STAINLESS STEEL
PIPE FITTINGS &
FLANGES**



**STAINLESS STEEL
FLEXIBLE PIPE COUPLINGS**



STAINLESS STEEL TUBE FITTINGS & VALVES FOR PROCESS, POWER & INSTRUMENTATION APPS

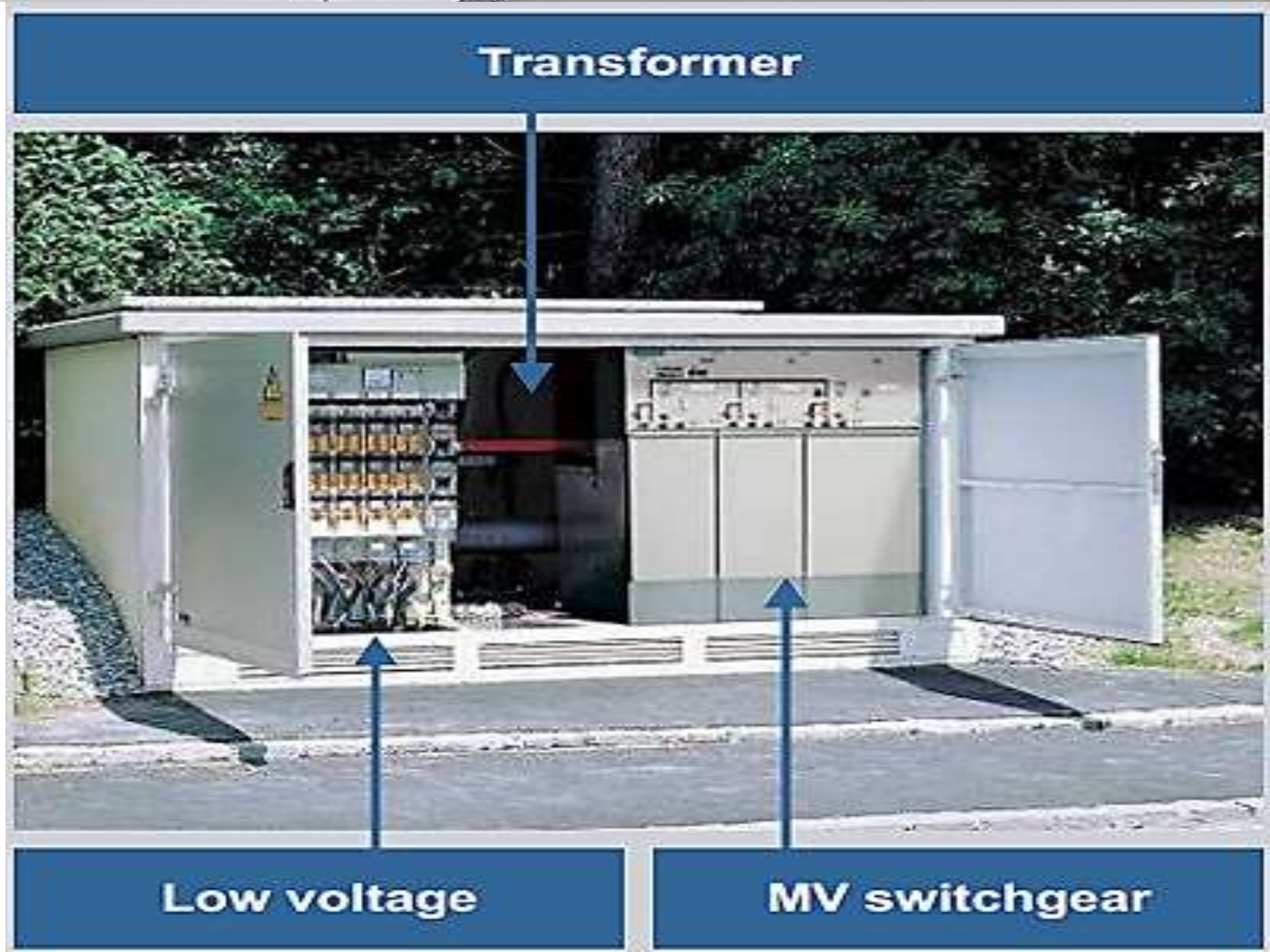




ELECTRIC MOTORS

**ALTERNATIVE CURR.
DIRECT CURRENT
POWER-DRIVES
SOFT-STARTERS**

MV SWITCHGEARS & COMPACT SUBSTATIONS



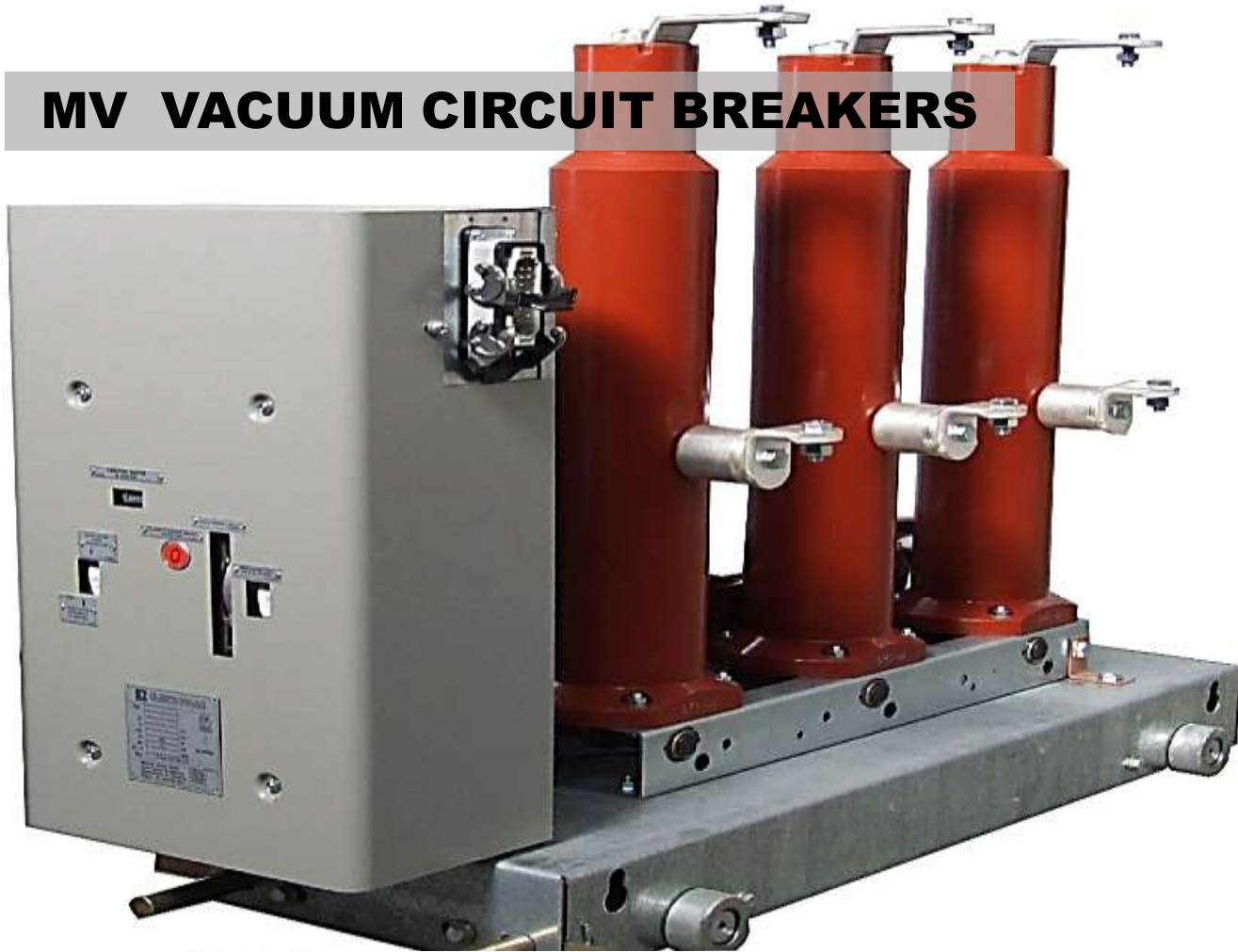


HV POWER TRANSFORMERS



MV POWER TRANSFORMERS

MV VACUUM CIRCUIT BREAKERS



PASSIVE HARMONIC FILTERS



POWER FACTOR CORRECTION SOLUTIONS



HV CAPACITOR BANKS





POWER GENERATORS : 50 KVA UPTO 3000 KVA



MACHINE SPARE PARTS

**GEARS, GEARBOXES, ROLLER BEARINGS, SHAFTS, SEALS
ELECTRIC MOTORS, ACTUATORS, HYDRAULIC & PNEUMATIC CYLINDERS,
AND OTHER SPARES**



HOT WATER BOILERS
STEAM BOILERS



PUMPS

- SUCTION**
- CENTRIFUGAL**
- SUBMERSIBLE**
- SELF-PRIMING**
- FIRE PUMPS**

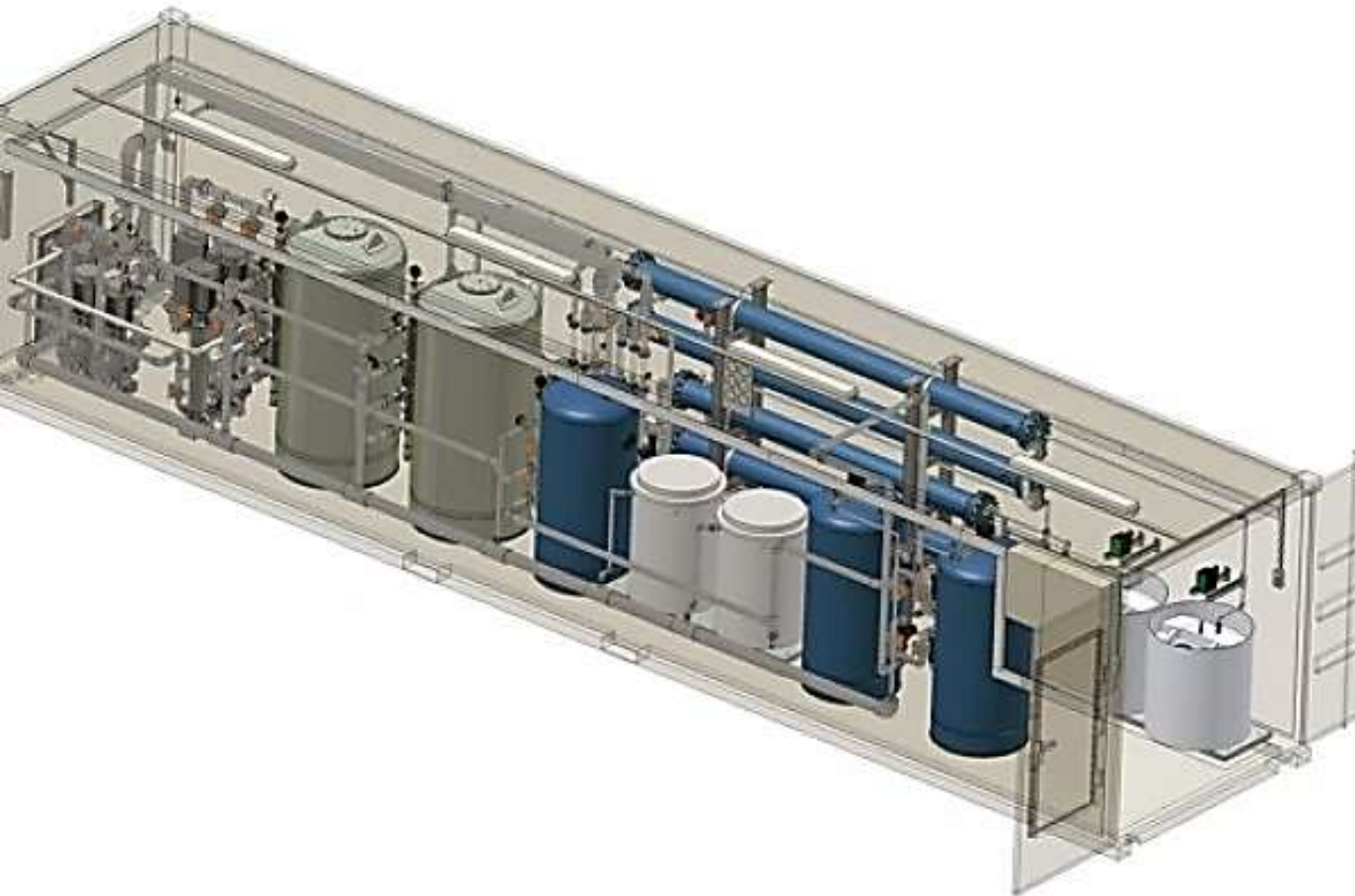




AHU : AIR HANDLING UNITS FOR BUILDING HVAC SYSTEMS

AIR COMPRESSORS





**CONTAINER-TYPE
SEA WATER DESALINATION PLANTS**

**RIVER & LAKE WATER
PURIFICATION PLANTS**



COLD STORAGE WAREHOUSES FOR FOOD & FRUITS / VEGS



MECHANICAL, ELECTRICAL & INDUSTRIAL CONSTRUCTION





**WE ARE COMMITTED TO YOUR SUCCESS WITH
OUR 36 YEARS OF EXPERIENCE**

PROJECT MANAGEMENT DEPARTMENTS

**Architectural
Plans &
Specifications**

**Select
Building
Materials**

**Contracts &
Subcontracts
& Claims**

**Manage
Subcontractors
& Vendors**

**Building
Codes &
Standards**

**Cost
Estimates**

**Quality
Management**

**Cost Reports
Cash Flow
Payments**

**Structural
Design
Principles**

**Legal
Obligations &
Licensing**

**Health &
Safety Risk
Management**

**Scheduling &
Control**

**Mechanical &
Electrical
Services**

**Tender
Documents**

**Project
Risk
Management**

**Prelim. &
Final
Handover**



GET : GLOBAL ENGINEERING & TRADING LTD

- **36 YEARS OF EPC & MEP EXPERIENCE**
- **15 YEARS EXPERIENCE IN GCC**
- **MODERN EPC/MEP KNOW-HOW**

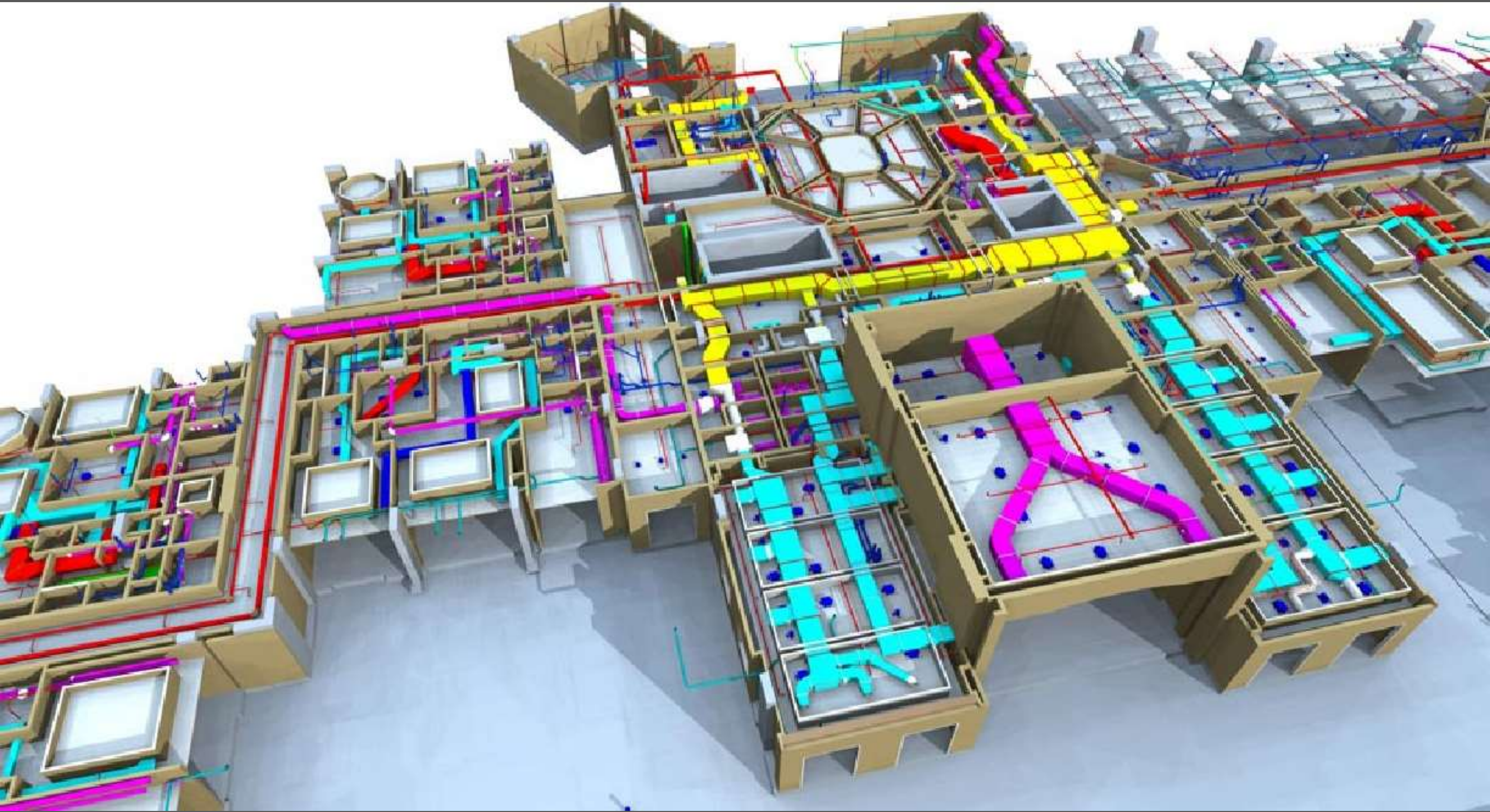
**WE COMPLY WITH THE AMERICAN, BRITISH & EUROPEAN
STANDARDS OF CONSTRUCTION & MATERIALS**





**TEAM-WORK &
GOOD COORDINATION
BETWEEN**

- **CLIENT**
- **MAIN CONTRACTOR**
- **PROJECT CONSULTANTS**
- **CIVIL SUBCONTRACTORS**
- **INTERIOR DECORATORS**
- **MEP TEAMS**



AUTO-DESK REVIT BIM :

**MORE EFFICIENT FABRICATION, ELIMINATION OF CLASHES
EASIER INSTALLATION, MEET TIME SCHEDULES
MORE ACCURATE COST ESTIMATES, EASIER VALUE ENGINEERING
VARIATION TRACKING**

Primavera P6 : Bldg (Office Building Addition)

File Edit View Project Enterprise Tools Admin Help

Layout: Classic Schedule Layout Filter: All Activities

| Activity ID | Activity Name | Original Duration | Remaining Duration | Schedule % Complete | Start |
|---------------------------------|--|-------------------|--------------------|---------------------|----------|
| Office Building Addition | | | | | |
| Design and Engineering | | 45 | 0 | 100% | 05-Feb- |
| BA400 | Design Building Addition | 23 | 0 | 100% | 05-Feb- |
| BA000 | Start Office Building Addition Project | 0 | 0 | 100% | 05-Feb- |
| BA-DE | Design & Engineering Summary | 45 | 0 | 100% | 05-Feb- |
| BA501 | Review and Approve Designs | 9 | 0 | 100% | 08-Mar- |
| BA469 | Assemble Technical Data for Heat Pump | 3 | 0 | 100% | 21-Mar- |
| BA470 | Review Technical Data on Heat Pumps | 10 | 0 | 100% | 26-Mar- |
| Foundation | | 62 | 0 | 100% | 21-Mar- |
| BA630 | Begin Building Construction | 0 | 0 | 100% | 21-Mar- |
| BA640 | Site Preparation | 18 | 0 | 100% | 21-Mar- |
| BA-F | Foundation Summary | 62 | 0 | 100% | 21-Mar- |
| BA650 | Excavation | 10 | 0 | 100% | 16-Apr- |
| BA660 | Install Underground Water Lines | 5 | 0 | 100% | 30-Apr- |
| BA670 | Install Underground Electric Conduit | 5 | 0 | 100% | 30-Apr- |
| BA680 | Form/Pour Concrete Footings | 10 | 0 | 100% | 07-May- |
| BA681 | Concrete Foundation Walls | 10 | 0 | 100% | 21-May- |
| BA690 | Form and Pour Slab | 5 | 0 | 100% | 06-Jun- |
| BA700 | Backfill and Compact Walls | 2 | 0 | 100% | 13-Jun- |
| BA701 | Foundation Phase Complete | 0 | 0 | 100% | |
| Structure | | 67 | 56 | 10.28% | 15-Jun- |
| BA710 | Erect Structural Frame | 20 | 12 | 55% | 15-Jun- |
| BA-S | Structure Summary | 67 | 56 | 16.42% | 15-Jun- |
| BA702 | Begin Structural Phase | 0 | 0 | 0% | 18-Jul-0 |
| BA712 | Floor Decking | 14 | 14 | 0% | 18-Jul-0 |

2007

Jan Feb Mar Apr May Jun Jul Aug Sep Oct Nov Dec Jan Feb Mar Apr

03-Jan-08, Office Building A

06-Apr-07 A, Design and Engineering

Design Building Addition

Start Office Building Addition Project

Design & Engineering Summary

Review and Approve Designs

Assemble Technical Data for Heat Pump

Review Technical Data on Heat Pumps

14-Jun-07 A, Foundation

Begin Building Construction

Site Preparation

Foundation Summary

Excavation

Install Underground Water Lines

Install Underground Electric Conduit

Form/Pour Concrete Footings

Concrete Foundation Walls

Form and Pour Slab

Backfill and Compact Walls

Foundation Phase Complete

17-Sep-07, Structure

Erect Structural Frame

Structure Summary

Begin Structural Phase

Floor Decking

Resources

- Add
- Delete
- Cut
- Copy
- Paste
- Resources
- Rsrc by Role
- Roles
- Activity Codes
- Predecessors
- Successors
- Steps

Display: Current Project's Resources

| Resource ID | Resource Name | Resource Type | Unit of Measure |
|-------------|---------------|---------------|-----------------|
| OR | Oliver Rock | Labor | |
| CRANE | Truck Crane | Material | Each |
| PK | Paul Kim | Labor | |
| AC | Ace Corp | Labor | |

Display Activities for selected...

Time Period Resource

Display: Open Projects Only

400h

320h

240h

160h

80h

Jan Feb Mar Apr May Jun Jul Aug Sep Oct Nov Dec Jan Feb Mar Apr

2007

Actual Units

Remaining Early Units

Overallocated Early Units

Limit

Portfolio: All Projects User: admin Data Date: 01-Jul-07 Access Mode: Shared Baseline: Current Project

**ELIMINATE OR REDUCE DELAYS WITH STRICT PROJECT CONTROL.
OUR ENGINEERING TEAM HAS THE BEST PROJECT PLANNING & CONTROL EXPERTS.**



MEP PREFAB & OFF-SITE ASSEMBLY :

BETTER SCHEDULING, MORE PRECISION, SUPPLY CHAIN INTEGRATION, REDUCED ON-SITE WASTE & RUBBISH, IMPROVED HSE MEASURES, REDUCED LABOUR COST, REDUCED MATERIAL TRANSPORT, IMPROVED QUALITY, HIGH-QUALITY END PRODUCT/SERVICE



MEP ENGINEERING & PROJECT MANAGEMENT

- Residential Projects
- Office Buildings
- Airports
- Metros & Railways
- Hospitals
- Luxury Malls
- Theme Parks
- Hotels
- Industrial Automation
- Substations
- ELV-BMS-ICT
- Data Centers
- District Cooling Plants
- Central Heating Plants

EPC ENGINEERING & PROJECT MANAGEMENT

- Power Plants
- Water Treatment Plants
- Polymer Plants
- Defence Industry
- Steel Rolling Mills
- Spiral Steel Pipe Factories
- Steel Tube Factories
- PVC Pipe Plants
- Furniture Factories
- Aluminium Extrusion Plants
- Leather Factories/Tanneries
- Steel-Structured Buildings
- Pre-Manufactured Buildings



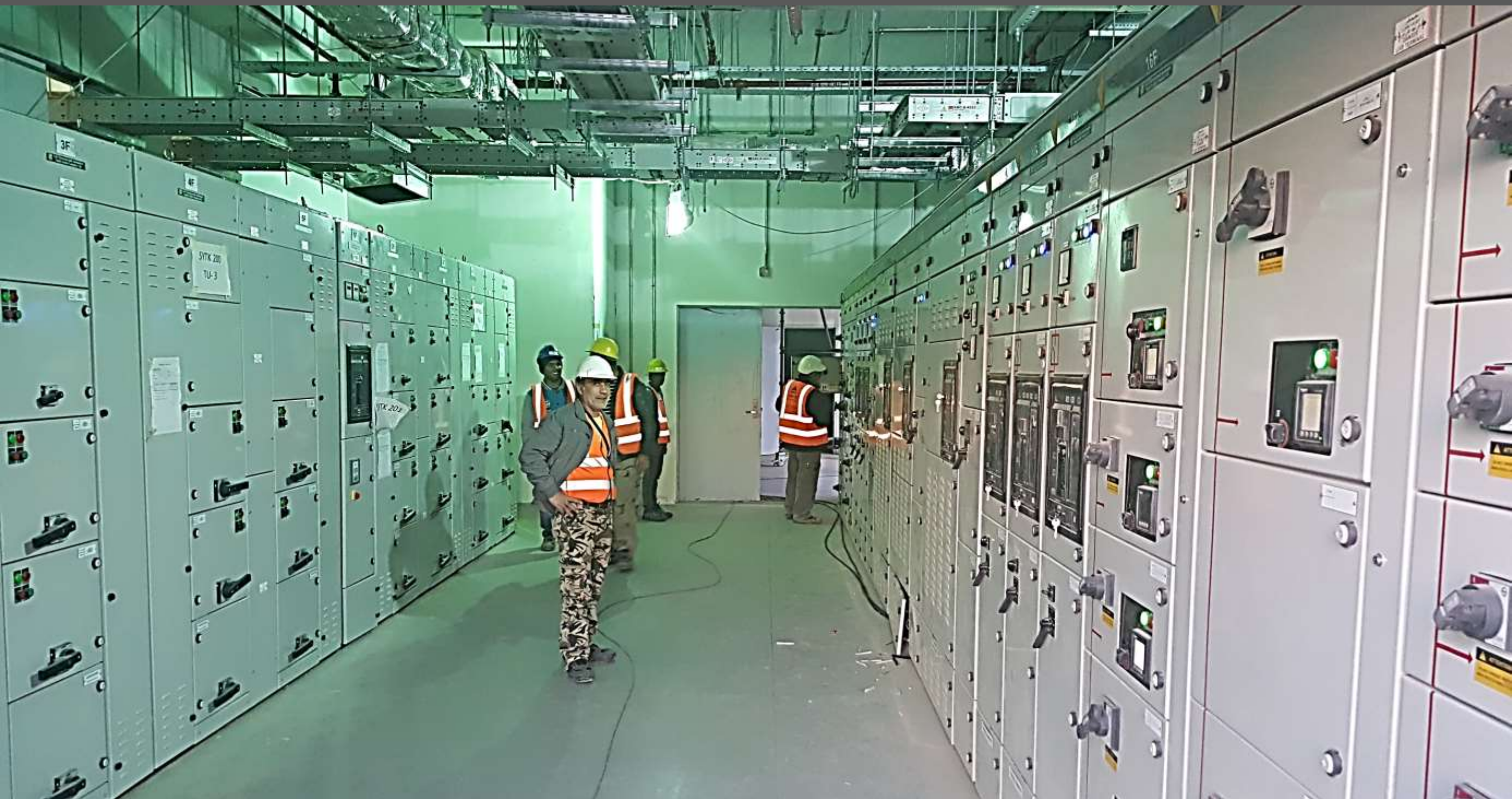
EXPERIENCE WITH THE BEST MANUFACTURERS IN THE INDUSTRY :

TRANE, DAIKIN, YORK, JOHNSON CONTROLS, CARRIER, CHASE, SYSTEMAIR, UNTES, TOSHIBA, TROX, BOREAS, AIREDALE, ENVIROTEC, CLIMATECH, HUNT-AIR, TRAC, ACTIONCLIMA, PANASONIC, CATERPILLAR, CUMMINS, PERKINS, FG WILSON, GRUPPI ELETTRICI, TEKSAN, MITSUBISHI, ABB, SCHNEIDER, SIEMENS, HPS, EATON, SCHALTBAU, BOSCH, BABCOCK-WANSON, ALFA, EROGLU, ERENSAN, DANFOSS, GRUPPO ATURIA, PACIFIC, KSB, HYUNDAI, THYSSENKRUPP, OTIS, KONE



HVAC & HOT WATER SYSTEMS

**CHILLERS, COOLING TOWERS, HVAC UNITS, AHUs, DATA CENTER AC
HOT WATER BOILERS, REFRIGERATION SYSTEMS
SOLAR HEATING, SOLAR ELECTRIC POWER**



ELECTRICAL SYSTEMS

Power systems, MV-LV Switchgears, Transformers and Generators, Power distribution panels, MCC panels, DDCP panels, ATS panels, Cable Carrier and Distribution (Cable Trays, Ladders and Bus Ways), Lightning Protection, UPS, Central Emergency Batteries, Lighting, LED systems, Giant LED Walls, Bridge Lighting, Street & Area Lighting, SCADA and PLC Power & Process Control Systems, HV Power Transformer & Substations



PLUMBING

- Sewerage Pipelines
- Drainage Pipelines
- Residential, commercial, industrial Plumbing
- Potable Water Piping
- Storm-Water Piping

PIPING SYSTEMS

- Industrial and Process Piping
- All Pressure Grades
- Black Steel, Stainless Steel (304L, 316L and 321L) and Alloy Steel
- TIG Welding, MIG/MAG Welding
- Cryogenic and high temperature applications
- Fire-Fighting Systems, Sprinklers
- Water Pumping Stations & Storage Systems
- Piping Insulation
- Sewage Treatment Plants
- Irrigation Systems
- Clean Water Treatment & Desalination Plants



BUILDING & INDUSTRIAL SECURITY SYSTEMS

- Fire Alarm System, Public Address & Voice Alarm Systems
- CCTV Systems
- Access Control & Intrusion Alarm Systems
- Perimeter Security Systems
- Building Automation, Lighting Automation, Smart Home Automation
- Data Network & Data Centers
- Telephone Systems, TV Systems
- Digital Sign-Boards, LED Walls
- Master Clock, Intercom, Nurse Call Systems
- Congress & Conference Systems, Stage Lighting
- Professional Audio-Video and Simultaneous Translation Systems
- Building Technologies Integration
- Industrial Safety, Security & Automation Systems



**ISTANBUL ESENYURT
CCPP POWER PLANT 180 MW**



**ESENYURT-BOGAZKÖY, ISTANBUL
390 MW CCPP POWER PLANT
DESIGN & ENGINEERING PROJECTS**



**BARWA HOUSING COMPLEX
DOHA-QATAR**



**BAHCESEHIR-ESENKENT
HOUSING COMPLEX- ISTANBUL**



**DOHA NORTH
SEWAGE TREATMENT PLANT**



**ARAD CITY -ROMANIA
WASTE WATER TREATMENT PLANT**



**ZALAU-ROMANIA
WASTE WATER TREATMENT PLANT**



**ALANYA-TURKEY
WASTE WATER TREATMENT PLANT**



**SATU MARE-ROMANIA
WASTE WATER TREATMENT PLANT**



**TOYOTA BOSHOKU FACTORY
ADAPAZARI-TURKEY**



**TOYOTA CAR FACTORY- ADAPAZARI-TURKEY
AUTOMATIC WELDING MACHINES ERECTION & HVAC SYSTEMS**



**TOYOTA TSUSHO COIL STORAGE FACTORY
ADAPAZARI-TURKEY**



**TOYOTETSU CAR PARTS FACTORY
KOCATELİ-TURKEY**



**YKK ZIP FACTORY CORLU-TURKEY
MECHANICAL WORKS**



**CNN / HURRIYET ISTANBUL
MECHANICAL SYSTEMS DESIGN**



**AL KHAFJI
DESALINATION PLANT
SAUDI ARABIA**



**AL NOUR HOSPITAL
MAKKAH**



JEDDAH WATER RESERVOIRS



RIYADH WATER PIPELINE CONSTRUCTION



MACHINERY SUPPLY & ERECTION

- **Steel Pipe Factories**
- **Plastic Pipe Factories**
- **Leather Factories/Tanneries**
- **Aluminium Profile Factories**
- **Furniture Factories**
- **Polymer Plants**
- **Defence Industry Factories**

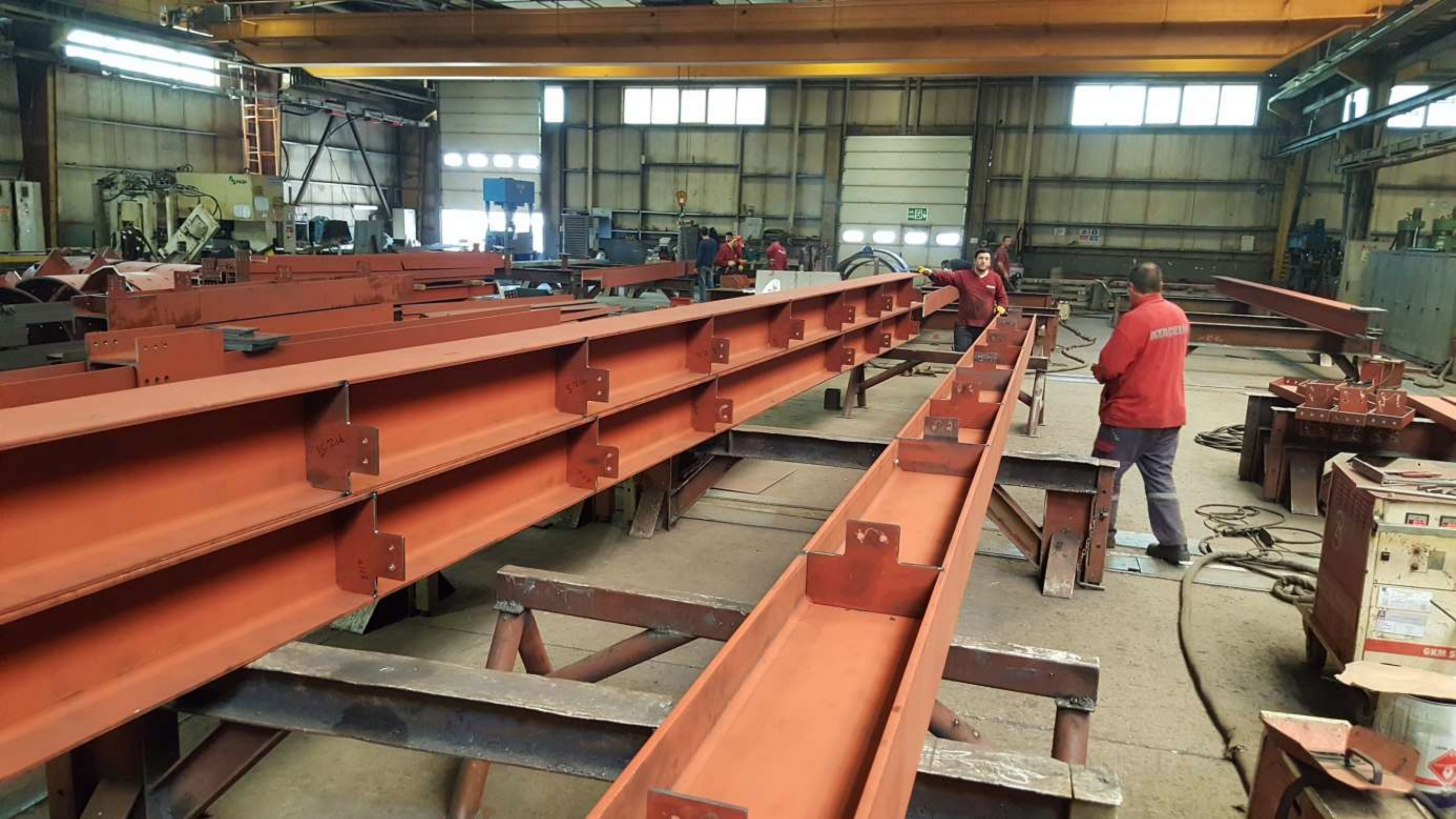


STEEL BUILDINGS FABRICATION & REFERENCES





PRE-MANUFACTURED STEEL-STRUCTURED BUILDINGS





212-SHOPPING MALL- ISTANBUL BAGCILAR



NOVA-REKLAM FACTORY –IZMIT-GEBZE



BETEK BOYA PAINT FACTORY -IZMIT-GEBZE



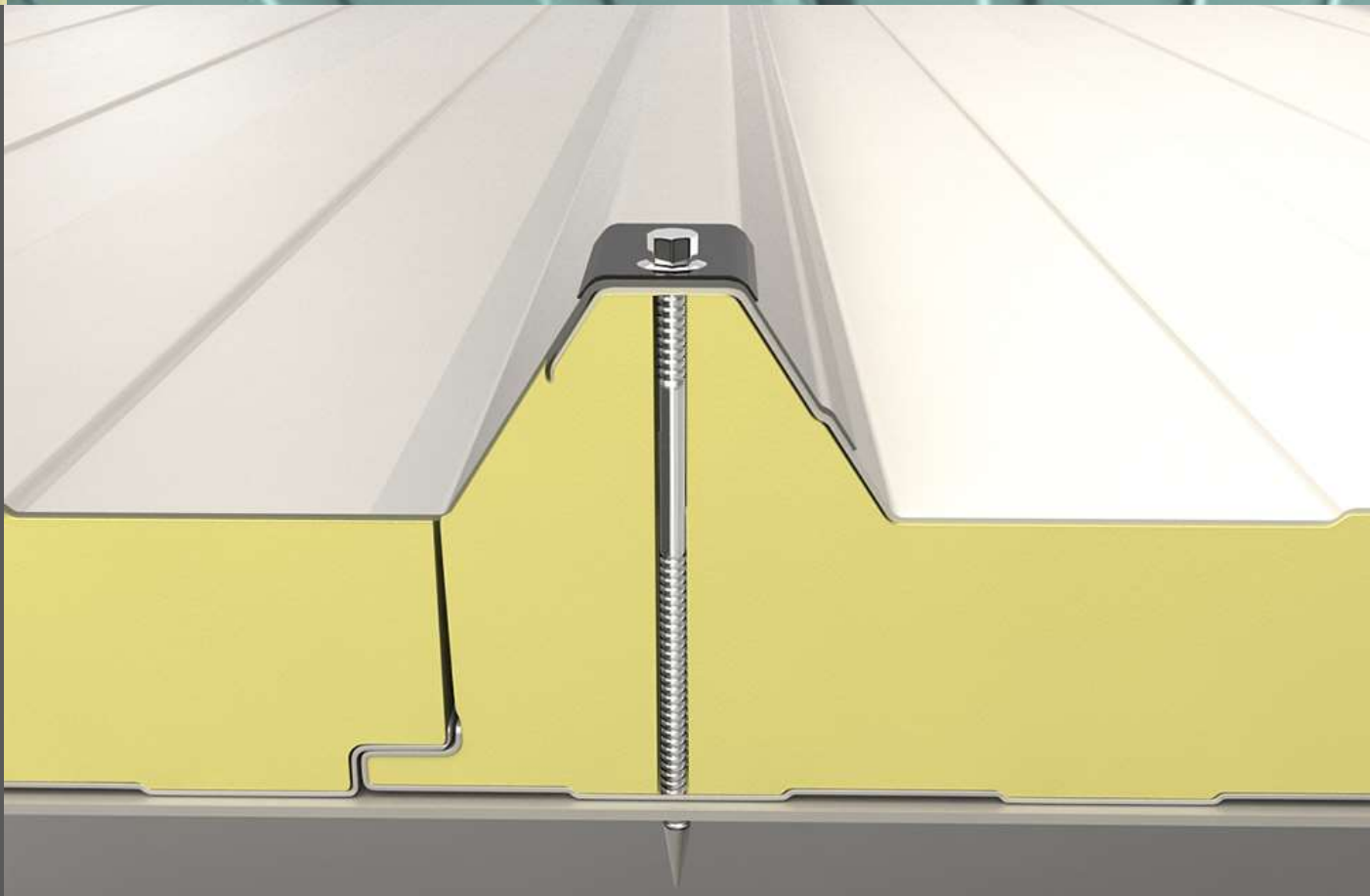
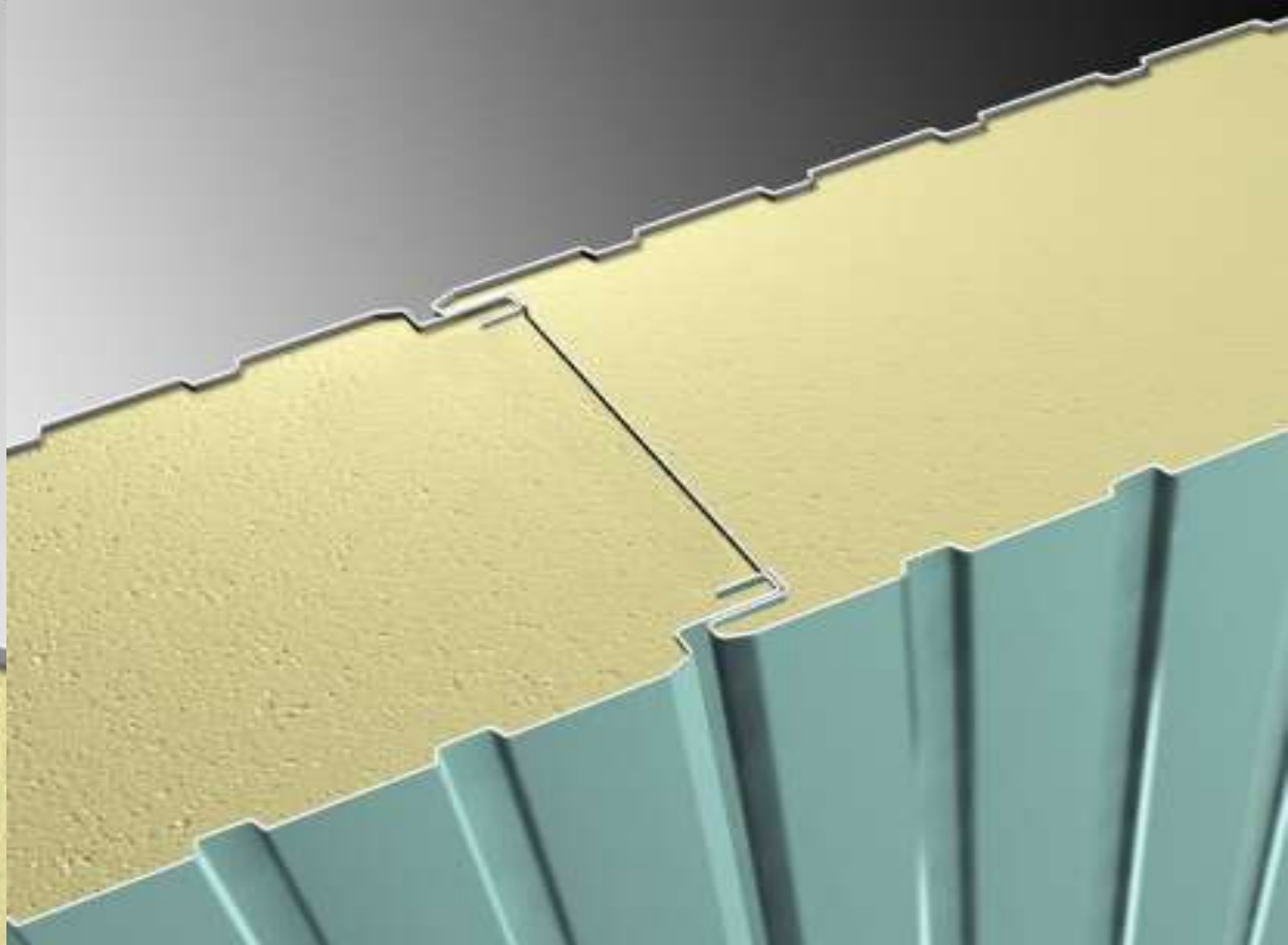
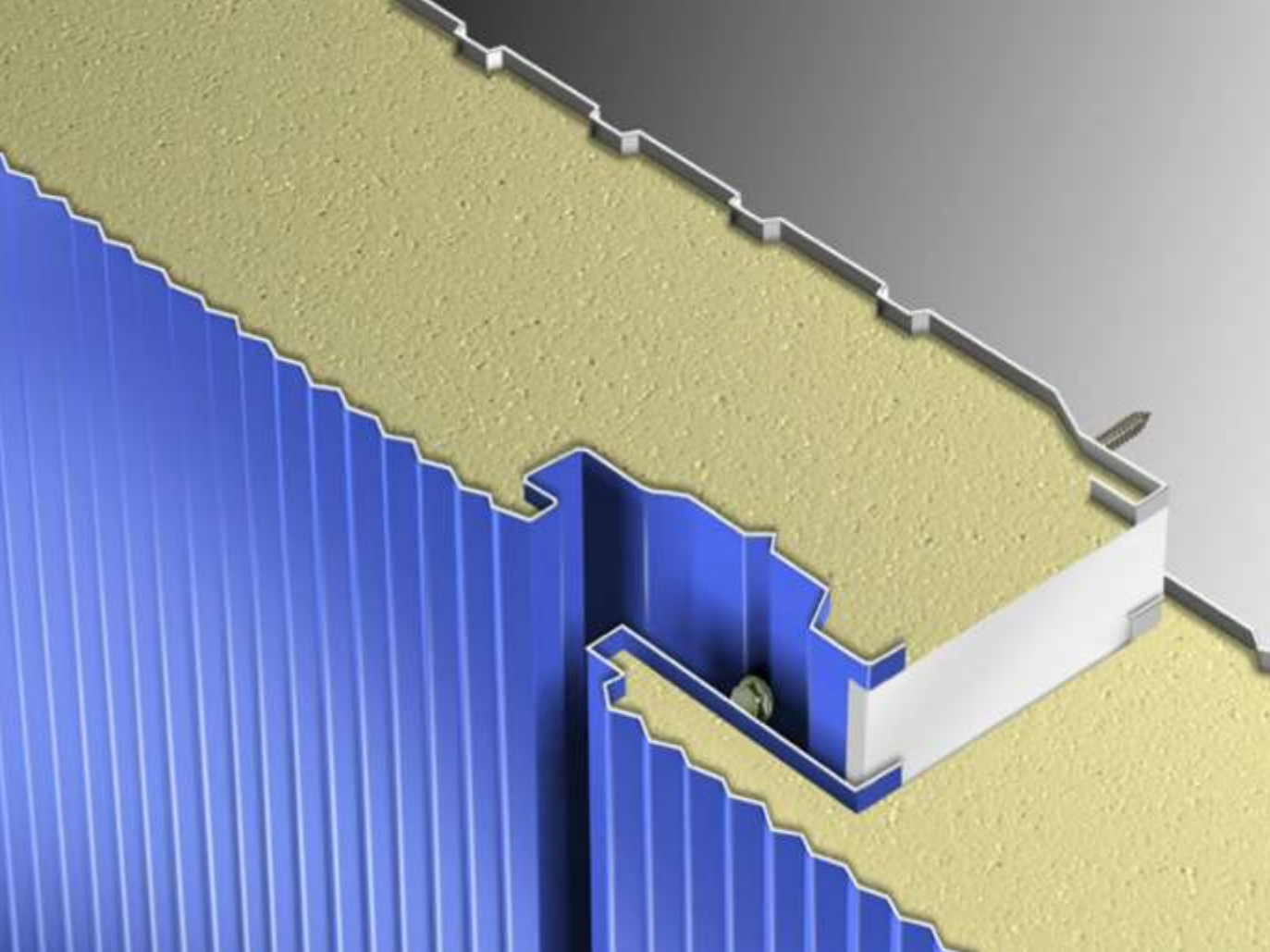
NEO SHOPPING CENTER-STEEL WORKS- ESKISEHIR



UNCULAR LOGISTICS WAREHOUSE-IZMIT GEBZE



BARSAN LOGISTICS-TUZLA, ISTANBUL



SANDWICH PANELS FOR WALLS & ROOFS

SANDWICH PANELS FOR ROOFS



STEEL SHEET ROOF COVERS





ROLL-UP DOORS





PREFAB OFFICES INSIDE THE FACTORIES / WAREHOUSES



FROM CONCEPT TO FINAL DESIGN & BUILD

PHOTOS FROM CONSTRUCTION PHASE







WATER PURIFICATION PLANTS