



## PRODUCTION STANDARDS

DN40 → DN400  
PN 10-16

<b>Design</b>	EN ISO 5211
<b>Marking</b>	EN ISO 5211
<b>Tests</b>	EN ISO 5211
<b>Corrosion Protection</b>	Electrostatic Powder Epoxy

## Features

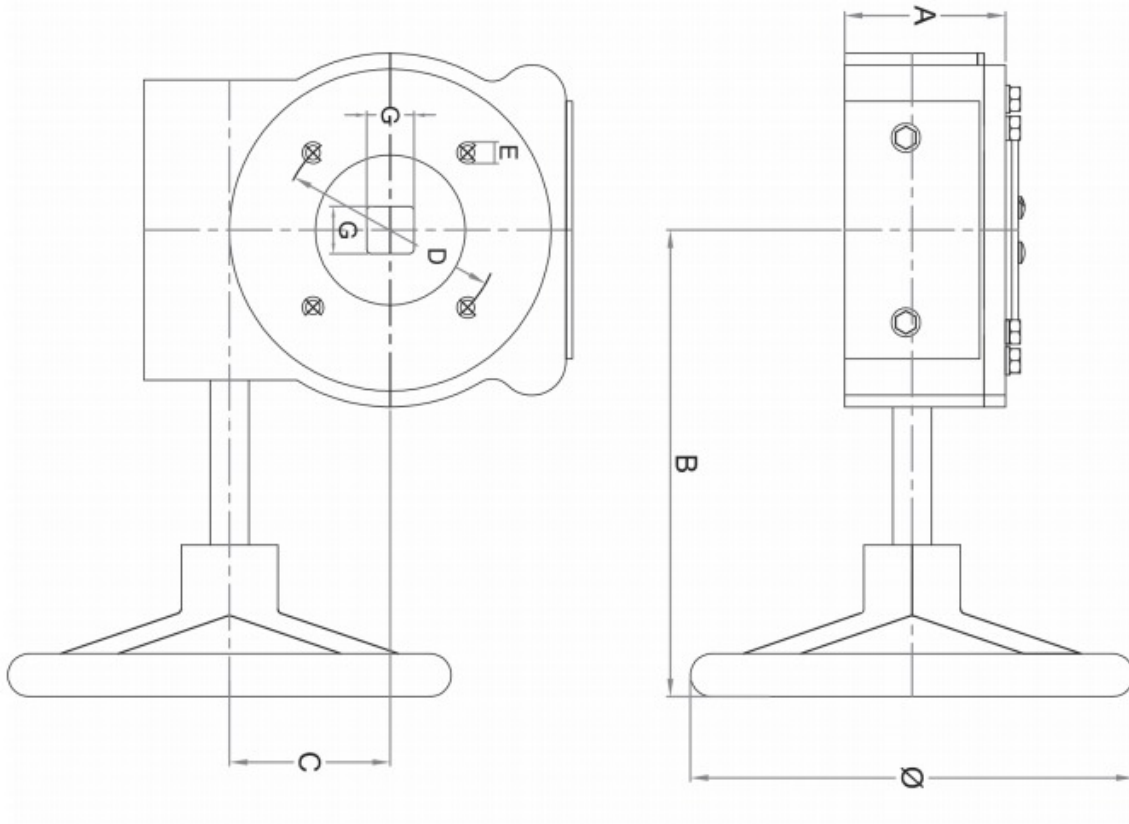
- Has cast iron body; stem and sealing seat are made of stainless steel.
- Lowering the minimum torque force allows the opening and closing of the valve by single operator.
- While the open-close torque of the valve with gearbox decreases, the number of turns needed to open-close the valve increase.
- Attention should be paid on the connection dimensions and gearbox ratio when selecting an actuator for the valve.
- The DN dimensions and gearbox types mentioned on the table are given according to the general applications.
- It is advised to receive support from Our Valve technical staff while selecting gearboxes.
- Most of the valves require an operator torque that can only be achieved with a gearbox. There are part turn and quart turn manual actuators.
- Manual actuation is usually driven by handwheels. Valves whose access location makes it difficult to operate on them can be driven by chain wheels.
- For security, the driver can be out of the gearbox spigot.
- Only authorized operators who bring the handwheel or wrench nut with them can operate the valve.

## Product Description

Gearbox is used for decreasing the torque needed to rotate the stem through the help of gears with ratio. Gearboxes are designed for Butterfly Valves.

## Scope of Application

- Lug & wafer type butterfly valves
- Double eccentric butterfly valve
- Concentric butterfly valves
- Gate valves
- Ball valves



DN (mm)	Ø	A	B	C	EN ISO 5211			GxG
					Flange Type	D	E	
40	190	60	160	47	F 07	70	M8	11x11
50								
65								
80								
100	190	65	165	45	F 07	70	M8	14x14
125								
150	190	65	165	45	F 07	70	M8	17x17
200	295	70	235	67	F 10	102	M10	17x17
250	295	70	235	67	F 10	102	M10	22x22
300	295	90	230	70	F 10	102	M10	22x22
350	295	90	230	70	F 12	125	M12	22x22
400	390	110	240	120	F 14	140	M16	27x27



**KASKO DEMİRÇELİK MAKİNE VE İNŞAAT SANAYİ TİCARET LİMİTED ŞİRKETİ**

**Güzelyurt Mah. Mehmet Akif Ersoy Cad. No: 38 Gökdemir Plaza Kat: 3 Ofis: 24 Zip Code:  
34524 Esenyurt / İSTANBUL**

Tel: +90 850 441 25 67

Cell: +90 541 699 01 34

info@kaskomakine.com

kaskomakine.com